

# We'll get you on the net

WiFi setup at TH Köln



# Content

What is eduroam? .....	1
1. eduroam on Windows 7 .....	2
2. eduroam on Windows 8 and 10 .....	6
3. Manual installation on Windows 8 and 10 .....	9
3.1. Install root certificate .....	9
3.2. Setting up the eduroam profile manually .....	11
4. eduroam on Android 4.4 to 10 .....	17
5. eduroam on Android 11 and above .....	21
6. eduroam on iOS 13 or later .....	24
7. eduroam on macOS .....	29
8. eduroam on Linux .....	33
9. Contact .....	36

## What is eduroam?



Eduroam (Education Roaming) enables teachers, students, and employees of TH Köln to use their campusID to access the Internet at the locations of all universities, colleges, and other organizations participating in eduroam.

This service is provided in close cooperation between DFN-Verein and the computer centers of the institutions connected to the science network.

An overview of the participating institutions and further information can be found here:

[www.eduroam.org](http://www.eduroam.org)

The most important configuration settings:

EAP method	<b>TTLS</b>
PHASE2 authentication	<b>PAP</b>
Identity	<b>campusID</b> (e.g. mmusterm)
Password	<b>campusID-Kennwort</b>
Anonymous identity	anonymous@th-koeln.de
CA certificate: Root certificate for the university	Download: <a href="http://www.th-koeln.de/eduroam">www.th-koeln.de/eduroam</a>



For most operating systems, we recommend the **eduroam Configuration Assistant Tool**, which greatly simplifies configuration.

You will find the download with the corresponding profile for our university on the following website:



<https://cat.eduroam.org/?idp=5134&profile=8268>

You can also come to see us during our service hours and receive the required installation tool there.

Information about our service hours can be found in [Chapter 9](#) at the end of this brochure.

## 1. eduroam on Windows 7



To set up eduroam on Windows 7, you need to have administrator rights on your device for at least one of the following steps.

For initial setup of eduroam on your device make sure you have an active Internet connection (mobile data such as LTE / 4G / 4G+, another WiFi or wired network).



Alternatively you can copy the installation tool via USB drive from another device.

Open the following website in the browser of your choice.

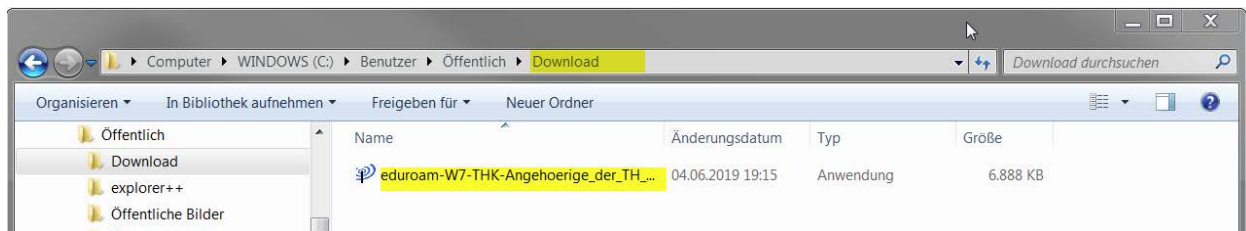
<https://cat.eduroam.org/?idp=5134&profile=8268>

Click the **MS Windows 7** button.



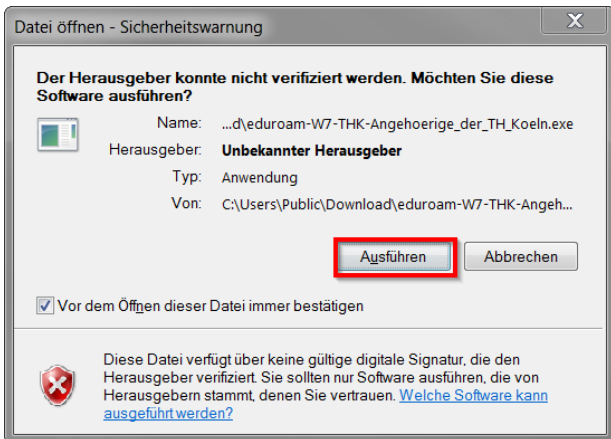
Confirm the Save dialog and then open the target folder.

Double-click on **eduroam-W7-THK-members\_of\_TH\_KoIn**.

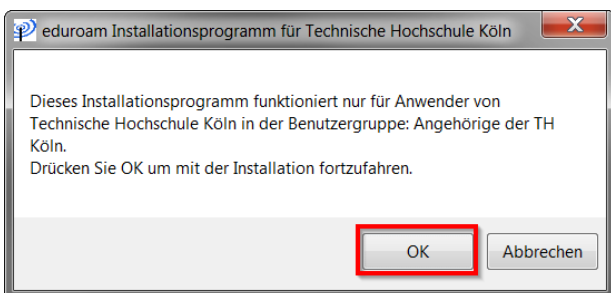
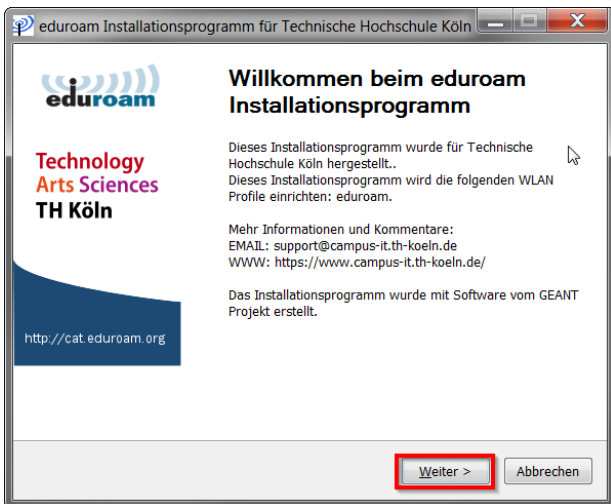


# 1. eduroam on Windows 7

Confirm the security warning by clicking on the **Run** button.

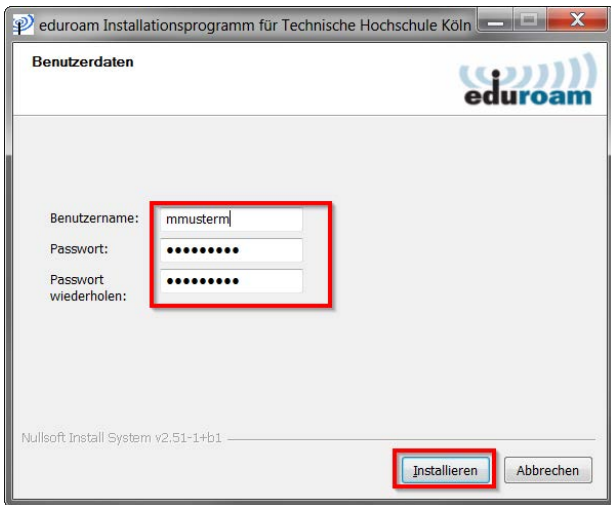


Confirm the following dialogs with **Next** and **OK**.

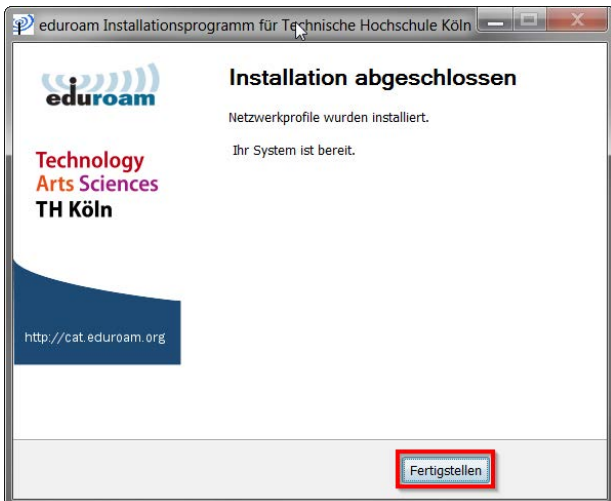


## 1. eduroam on Windows 7

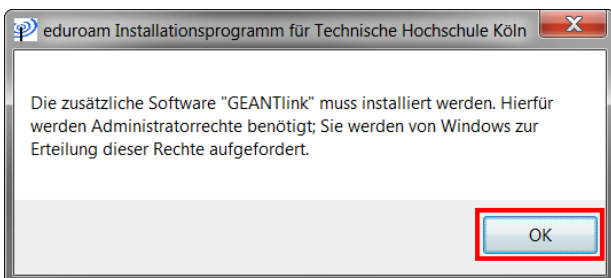
In the user credentials dialog, enter your **campusID** and your **campusID password** and click on **Install**.



Complete the installation process by clicking on **Finish**.



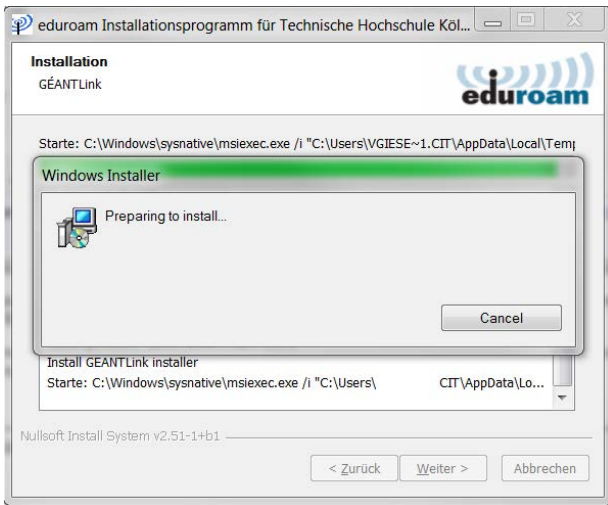
If you confirm this dialog with **OK**, you need administrator rights on your device in order to be able to confirm the following user account control query.



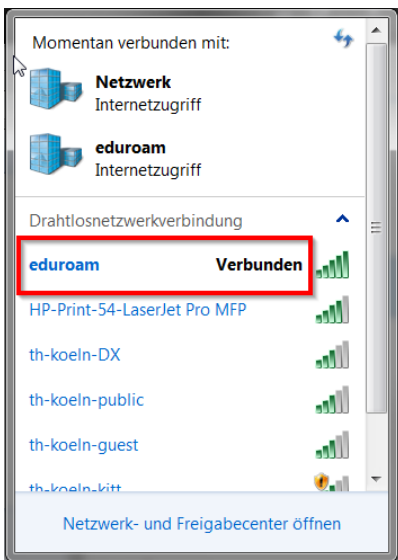
If you do not have this authorization, the installation will be aborted here. In this case, please contact your system administrator.

## 1. eduroam on Windows 7

If your authorizations are sufficient, the installation dialog and the completion of the installation will follow.



Check that the installation has completed successfully by clicking on the network icon in the Windows taskbar. The entry for the new eduroam wireless network is displayed.



## 2. eduroam on Windows 8 and 10

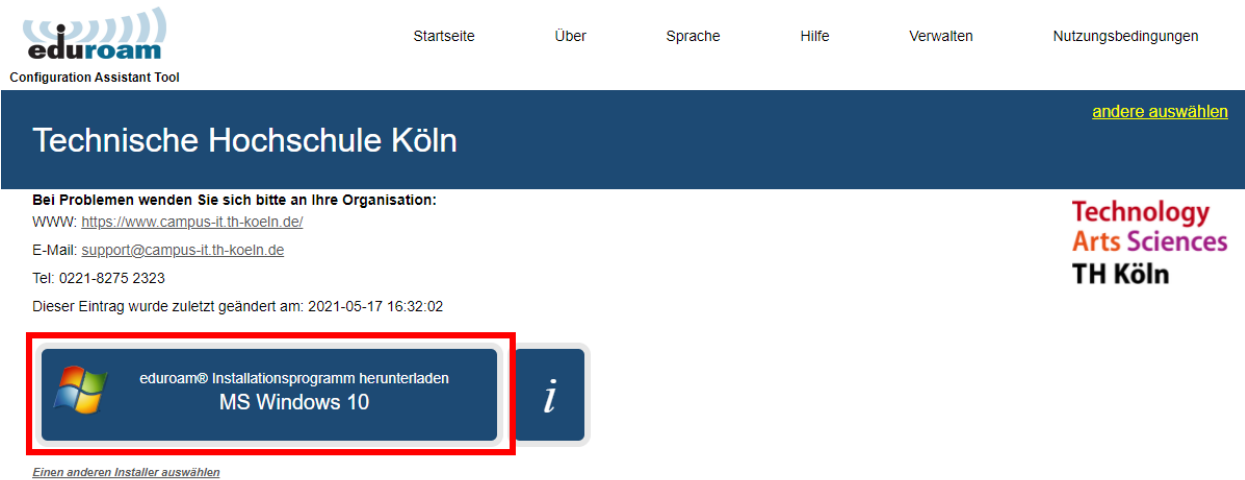
For initial setup of eduroam on your device make sure you have an active Internet connection (mobile data such as LTE / 4G / 4G+, another WiFi or wired network).



Alternatively you can copy the installation tool via USB drive from another device.

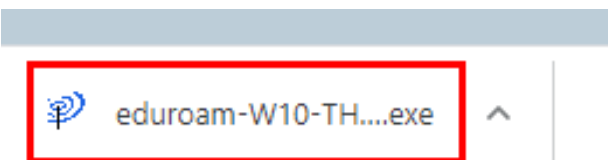
Open the page <https://cat.eduroam.org/?idp=5134&profile=8268> in your Internet browser.

Download the installation tool by clicking the button that shows your operating system.

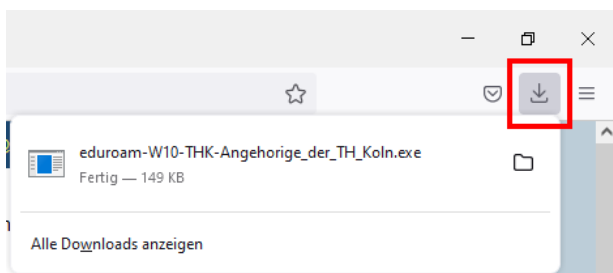


To open the downloaded file click on it in your browser.

In **Google Chrome** you find the file in the lower left corner.



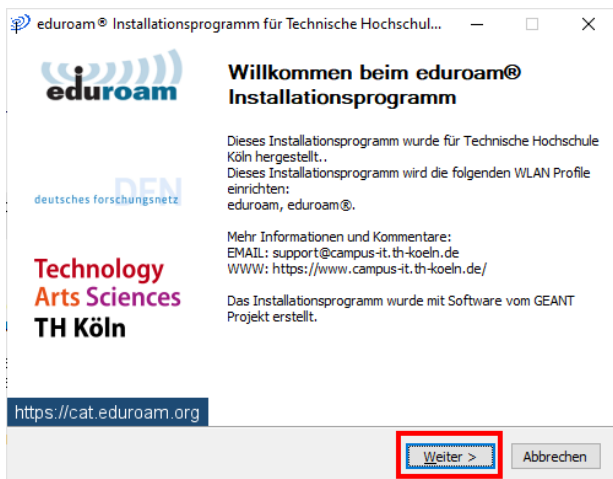
In **Firefox** and **Edge** the file will be shown after you click the arrow symbol on the top right corner.



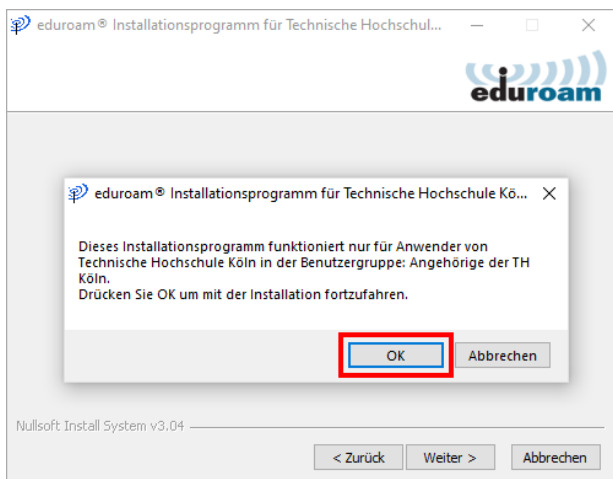


## 2. eduroam on Windows 8 and 10

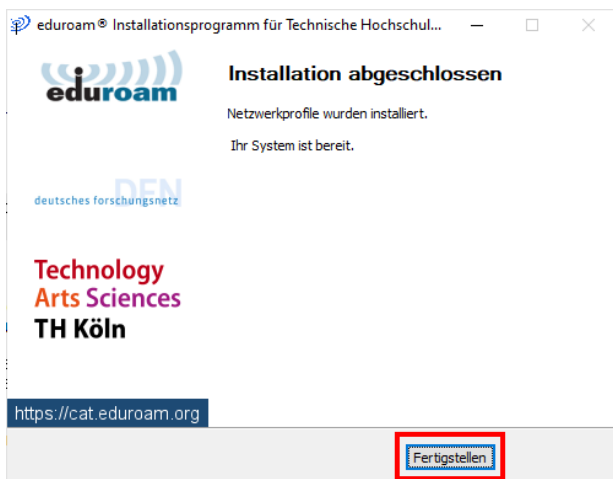
After starting the installer, please click on **Next**.



Confirm the next prompt with **OK**.



The installation is now complete. Please click on **Finish**.

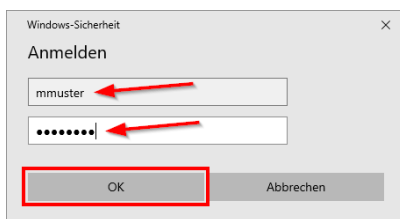


## 2. eduroam on Windows 8 and 10

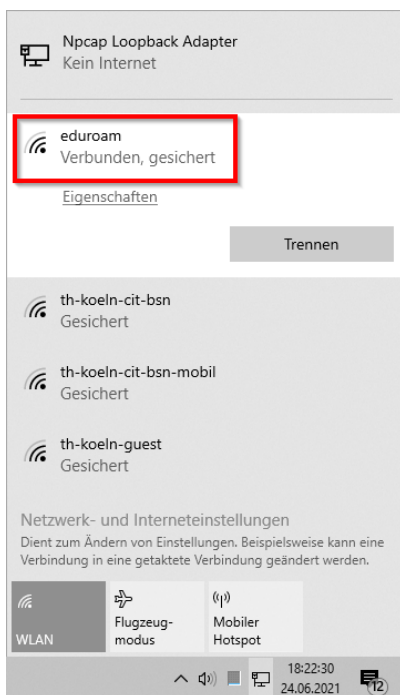
Click on the network icon in your taskbar and select the eduroam network. Click on **Connect**.



Enter your **campusID** user name and your **campusID** password and click **OK**.



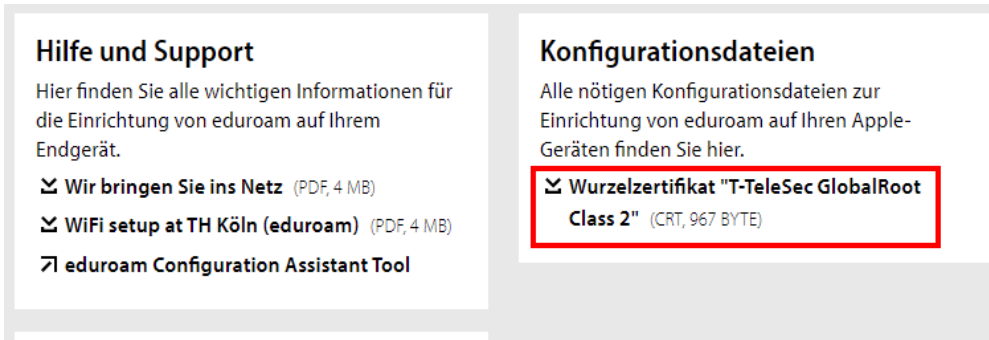
You are now connected to the **eduroam** network.



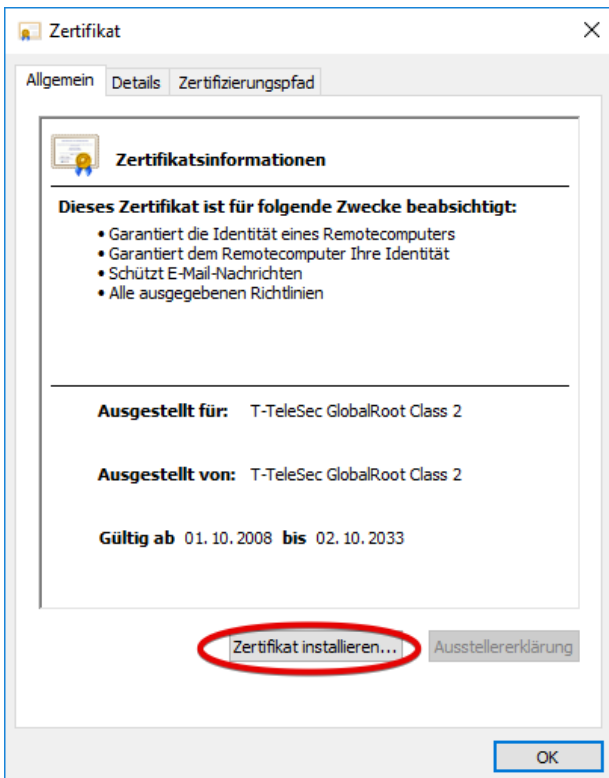
## 3. Manual installation on Windows 8 and 10

### 3.1. Install root certificate

You need a root certificate in order to use eduroam on Windows 10. You can download the certificate from [www.th-koeln.de/eduroam](http://www.th-koeln.de/eduroam) and then install it.

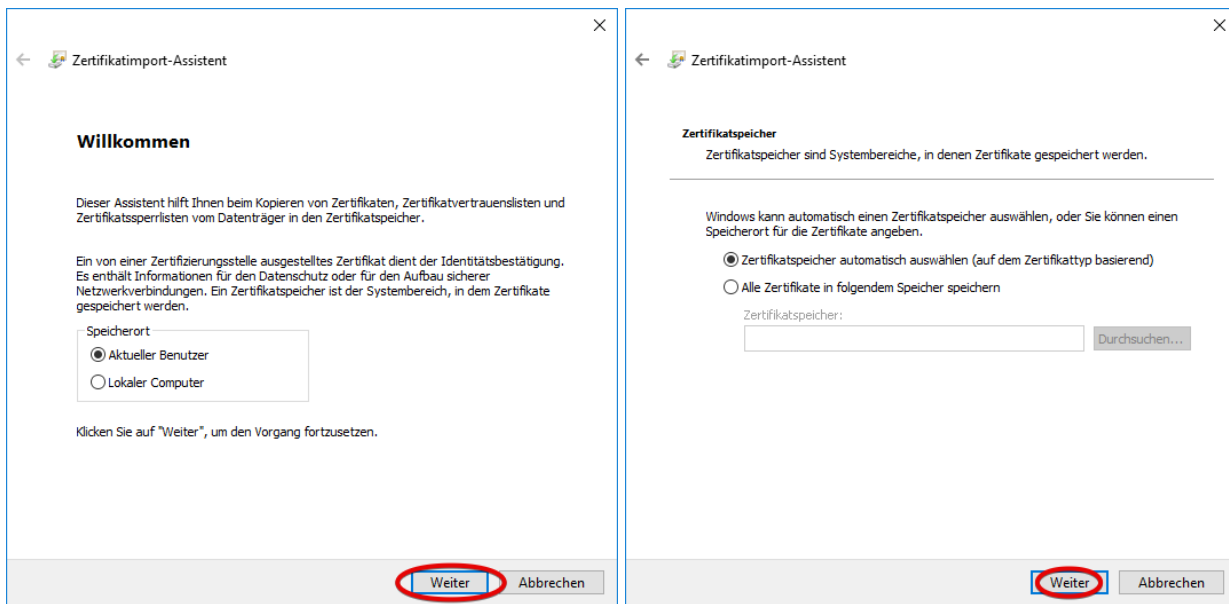


Open the downloaded file. It should be opened directly as a **certificate**. Then click on **Install certificate**.

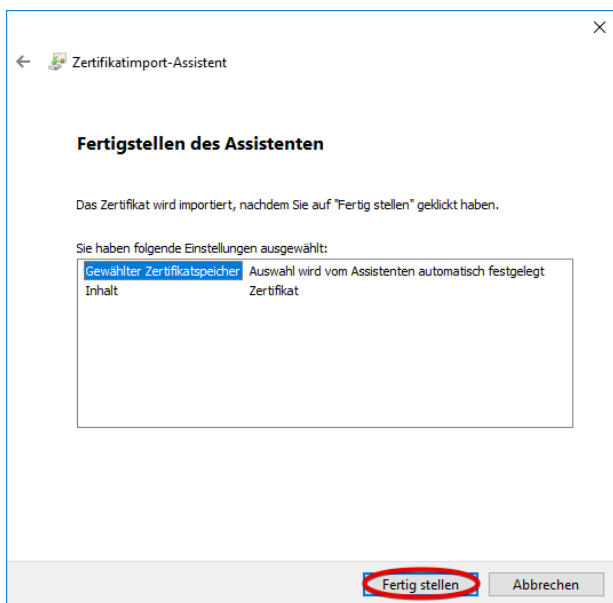


### 3. Manual installation on Windows 8 and 10

Click **Next** in the next two windows.



Then click on **Finish**.

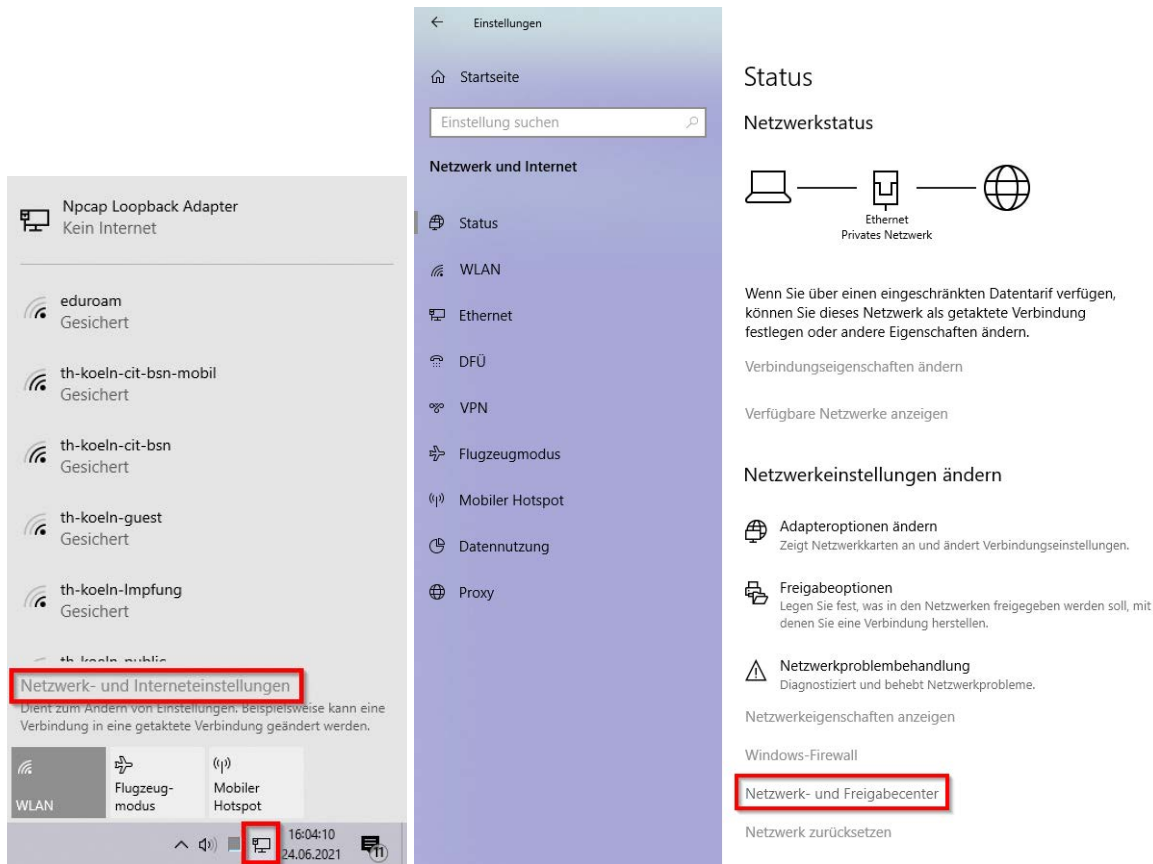


Restart your computer.

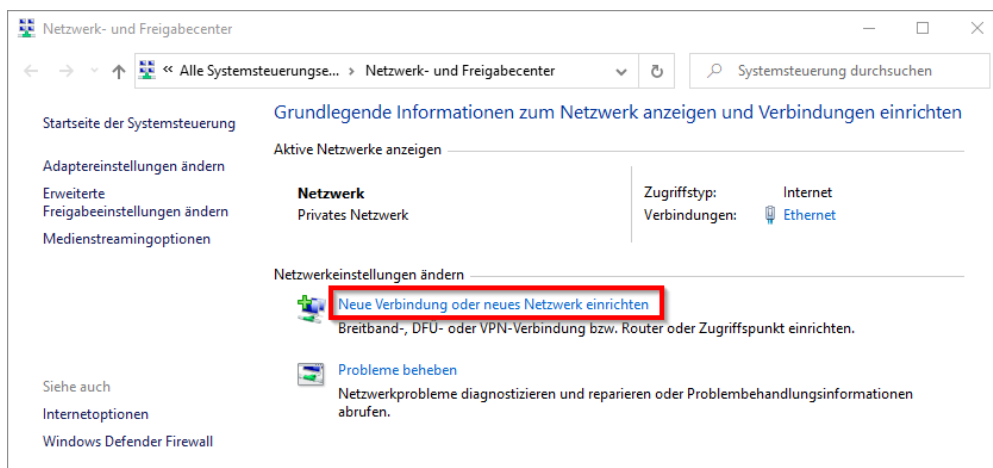
### 3. Manual installation on Windows 8 and 10

#### 3.2. Setting up the eduroam profile manually

Click on the WiFi or network icon and select **Open Network & Internet settings**. Then click **Network and Sharing Center**.

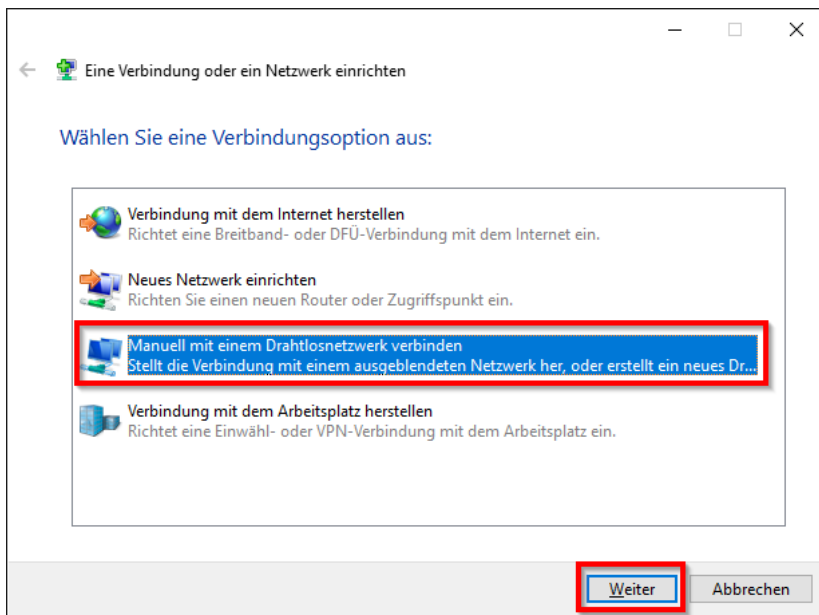


Now click on **Set up a new connection or network**.

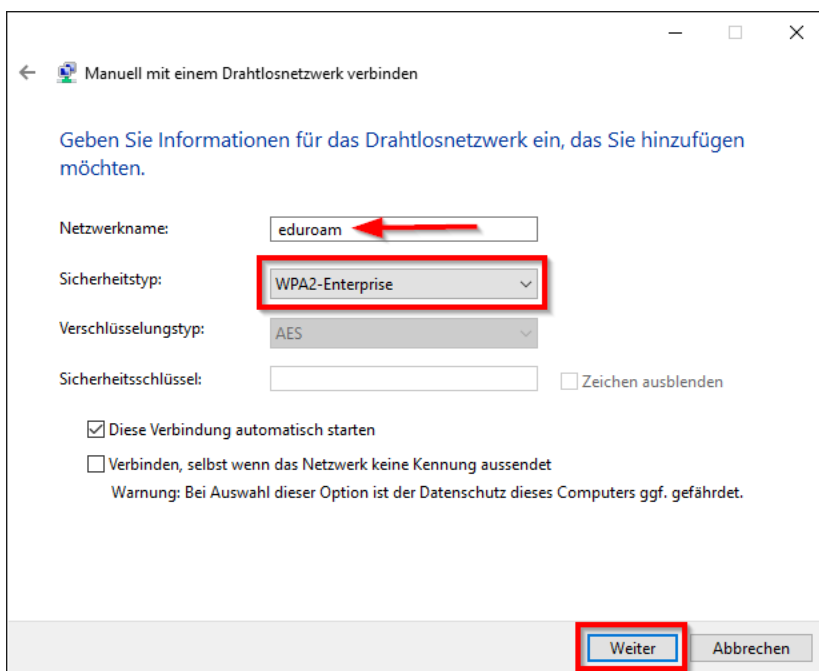


### 3. Manual installation on Windows 8 and 10

In the next window, select **Manually connect to a wireless network** and click on **Next**.

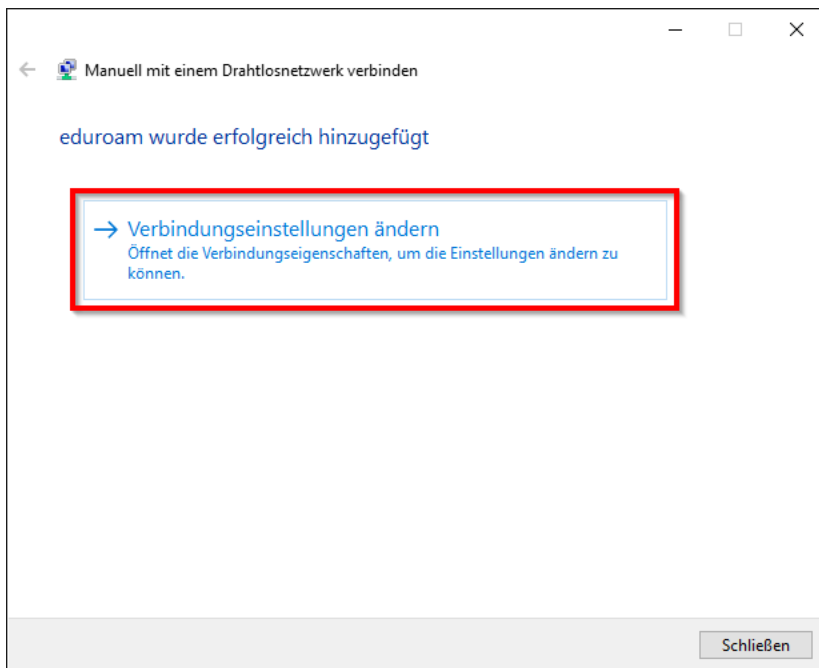


Please enter **eduroam** for network name and select **WPA2-Enterprise** for security type. Confirm with **Next**.



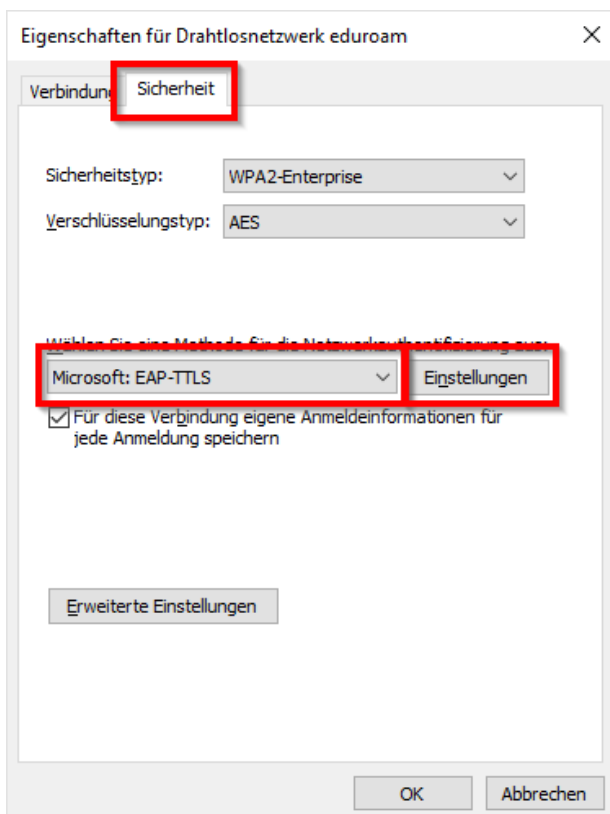
### 3. Manual installation on Windows 8 and 10

In the next window, click on **Change connection settings**.



Wireless network properties dialogue opens.

Switch to the **Security** tab and select **Microsoft: EAP-TTLS** as network authentication method. Then click on **Settings**.



### 3. Manual installation on Windows 8 and 10

Complete relevant fields with the following information (see picture).

Enable identity privacy	anonymous@th-koeln.de
Connect to these servers	radius-eduroam.campus-it.fh-koeln.de
Trusted Root Certification Authorities	<input checked="" type="checkbox"/> <b>T-TeleSec GlobalRoot Class 2</b>
Don't prompt user if unable to authorize server	<input checked="" type="checkbox"/>
Select a non-EAP method for authentication	<b>Unverschlüsseltes Kennwort (PAP)</b>

Then confirm with **OK**.

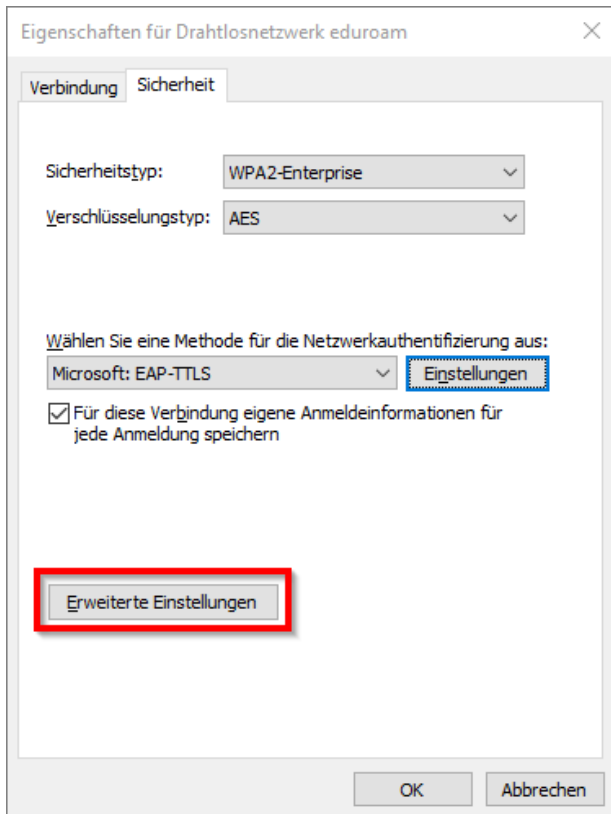


The **Server certificate validation** is important to prevent others from stealing your user credentials by providing a rogue eduroam network.

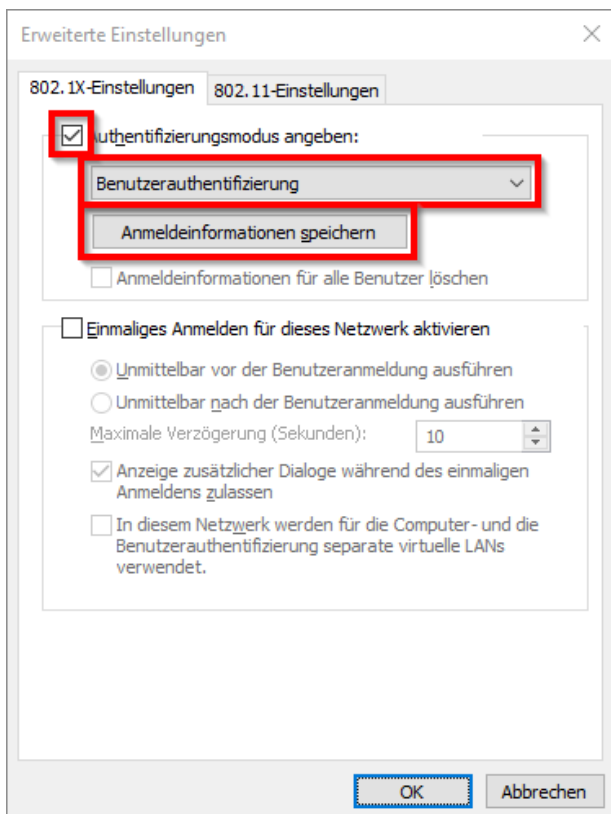


### 3. Manual installation on Windows 8 and 10

The **wireless network properties** dialogue appears again. Now select **Advanced settings**.



Activate **authentication mode** and select **User authentication** there. Then click on **Save credentials**.

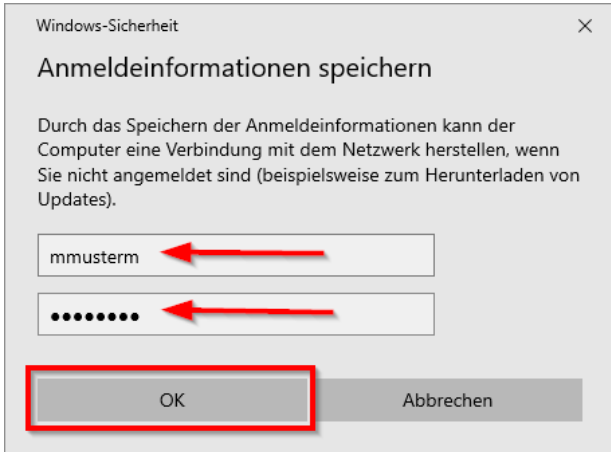


### 3. Manual installation on Windows 8 and 10

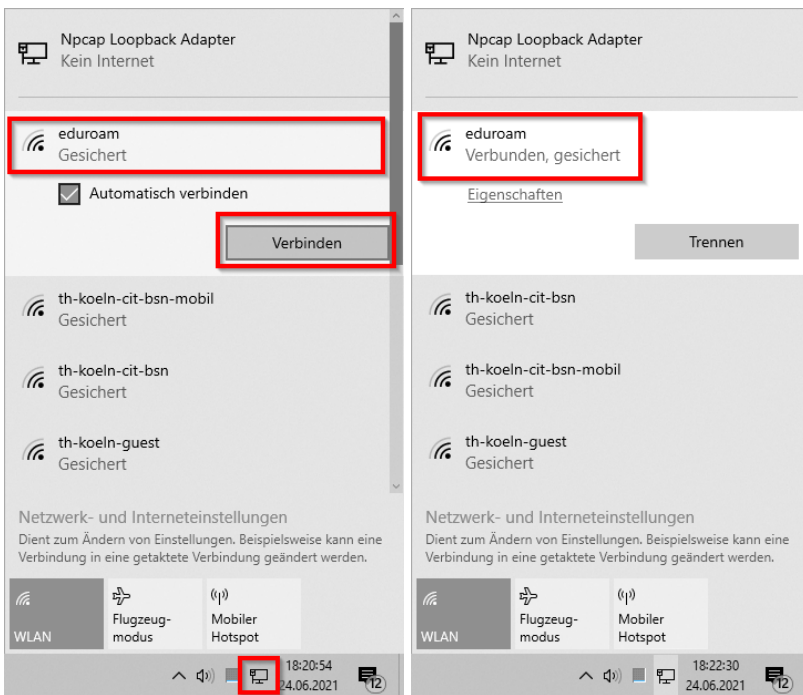
A window will open asking you to save your credentials.

Please enter your **campusID user name** (e.g.: mmusterm) and your **campusID password** here.

Confirm the windows with the credentials and the advanced settings with **OK** to close the windows.



Then display all available WiFi networks, click on **eduroam** and click on **Connect**.



You are now connected to the **eduroam** network.

## 4. eduroam on Android 4.4 to 10

A Samsung S9 with Android 10 was used as an example for the step-by-step installation.



For initial setup of eduroam on your device make sure you have an active Internet connection (mobile data such as LTE / 4G / 4G+, another WiFi or wired network).

First, open the following page on your Android device.

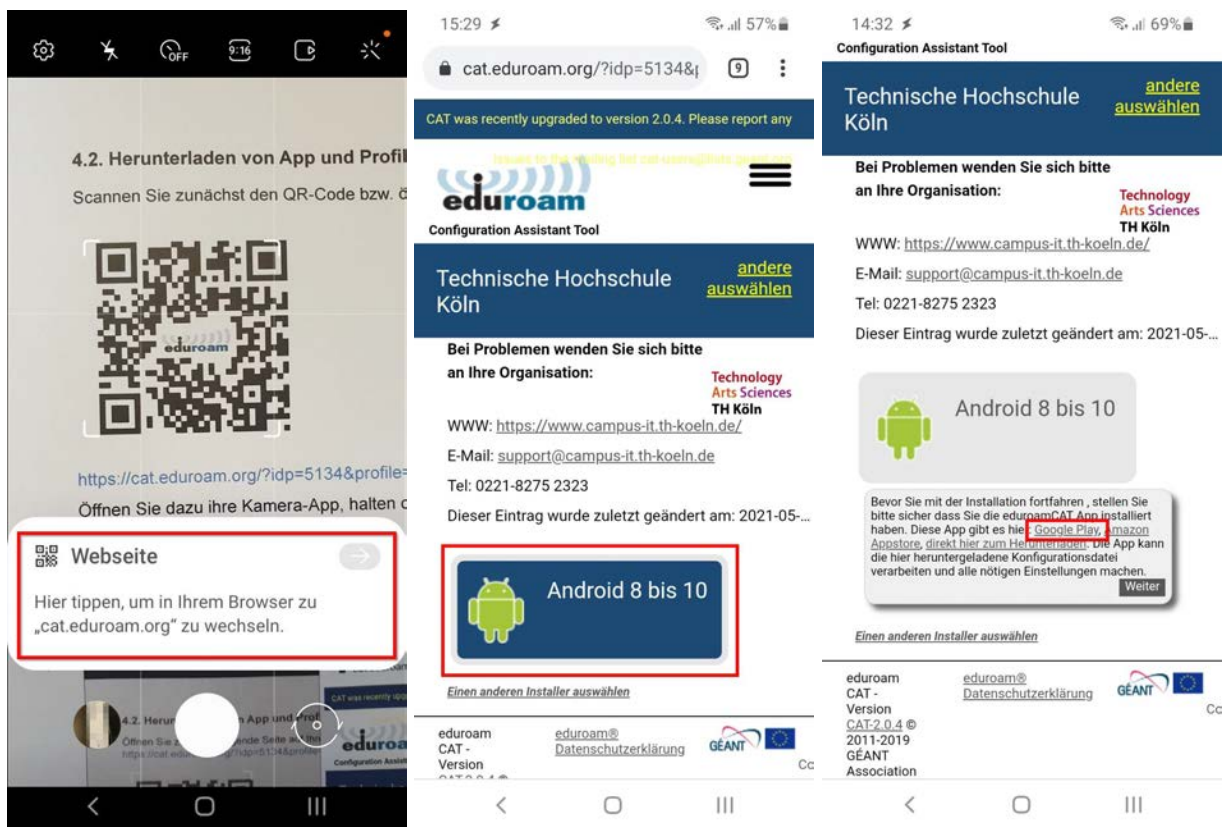


<https://cat.eduroam.org/?idp=5134&profile=8268>

Open your camera app, point the phone to the QR-Code and wait for the code to be recognized. Click the button to open the link with your browser.

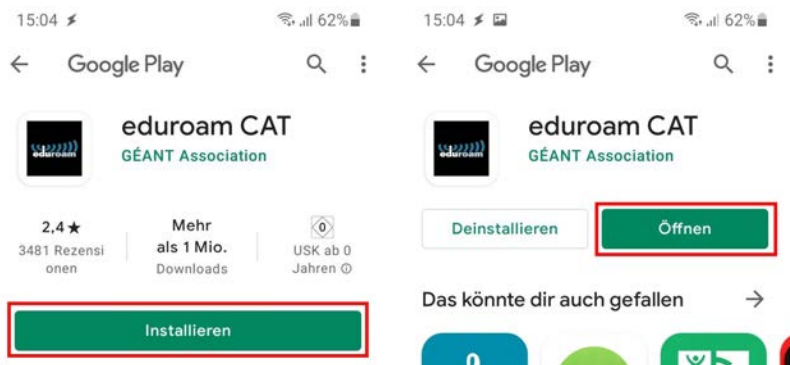
On the website click **Android 8 bis 10**.

Now click on the link for the corresponding app store (usually **Google Play**) to install the eduroamCAT app.



#### 4. eduroam on Android 4.4 to 10

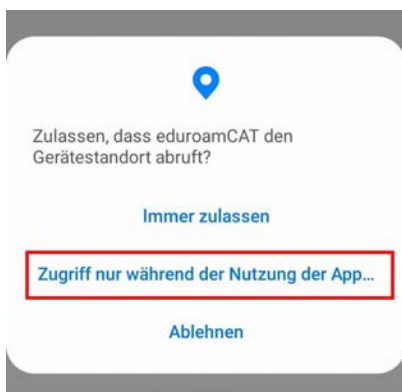
Click **install** and open the app, after the installation is finished.



If you have not yet set up a screen lock, the app will now prompt you to set it up. A screen lock must be selected, otherwise the eduroam configuration cannot be performed.



Select **Allow only while the app is in use**.

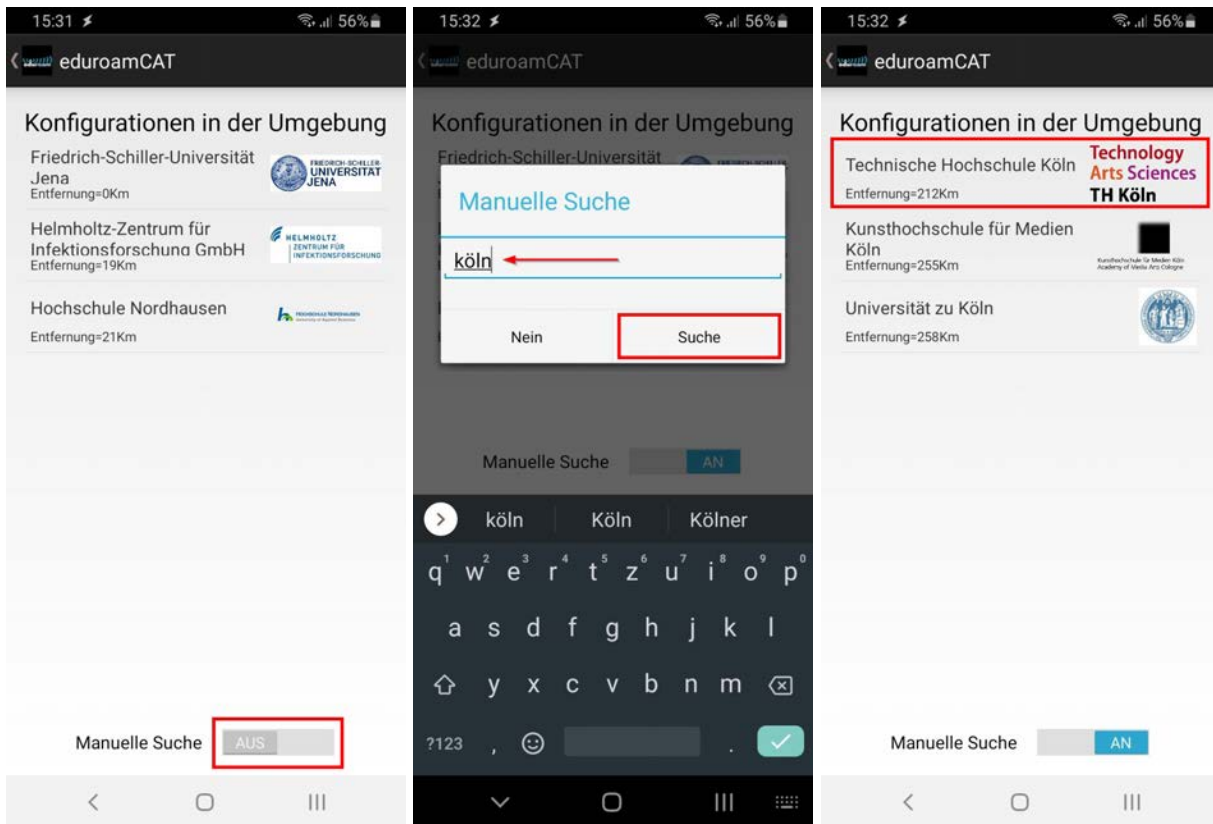


#### 4. eduroam on Android 4.4 to 10



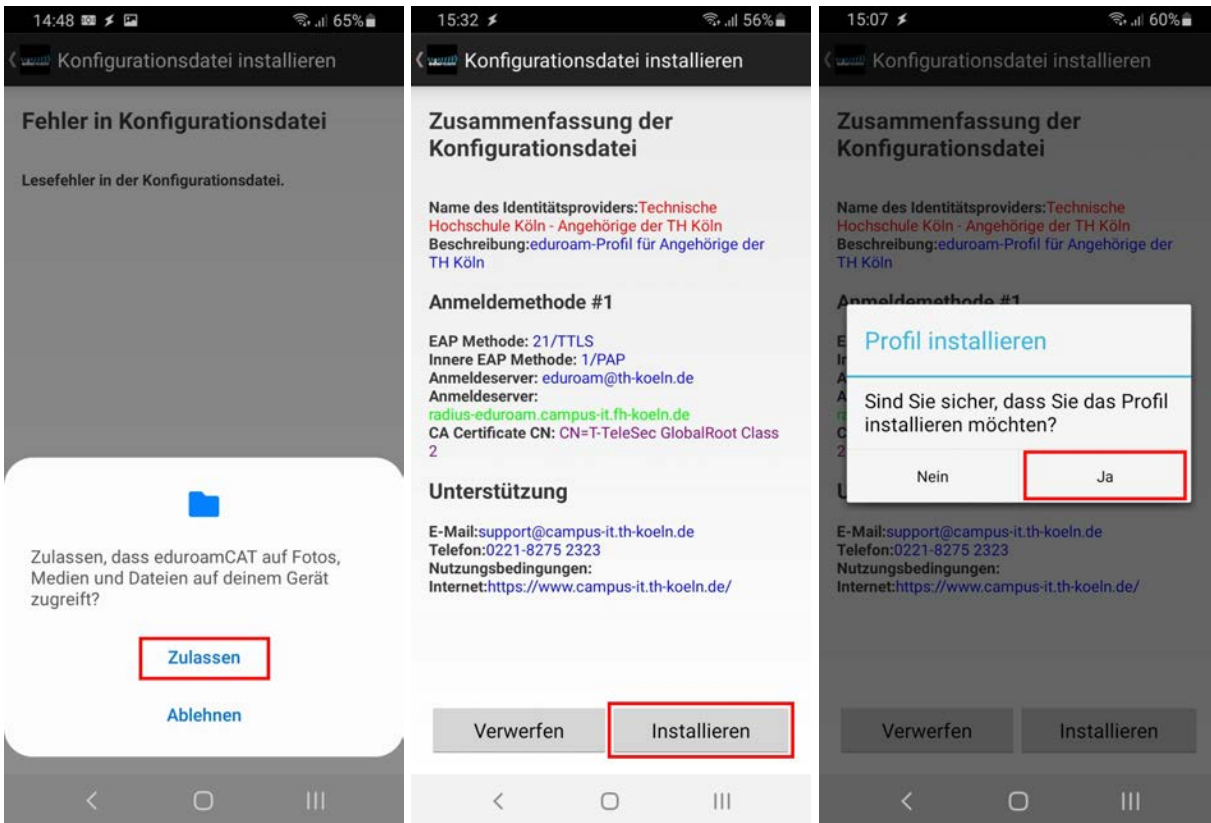
If the location based search does not show **Technische Hochschule Köln** activate the **manual search**, type in **köln** and click on **Search**.

Then select the entry **TH Köln**.

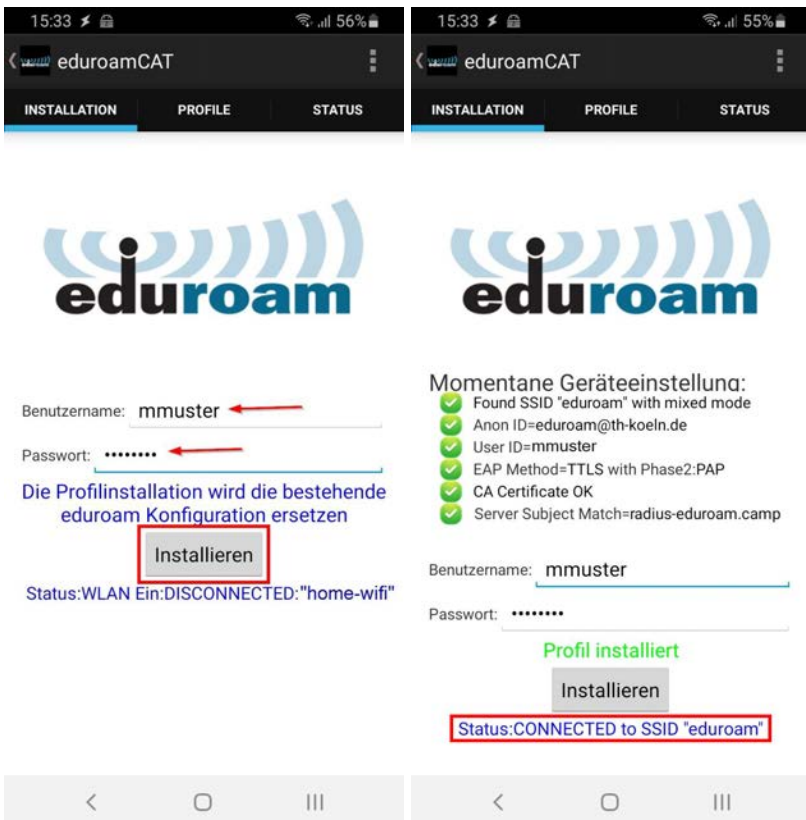


#### 4. eduroam on Android 4.4 to 10

Confirm the installation of the profile with **Yes** and allow the app to access your files (such as the download folder) by clicking on **Allow**.



Next, enter your **campusID** user name and **campusID** password on the app's start screen. Then click on **Install**.



## 5. eduroam on Android 11 and above

A Samsung S9 with Android 10 was used as an example for the step-by-step installation.



For initial setup of eduroam on your device make sure you have an active Internet connection (mobile data such as LTE / 4G / 4G+, another WiFi or wired network).

First, open the following page on your Android device.

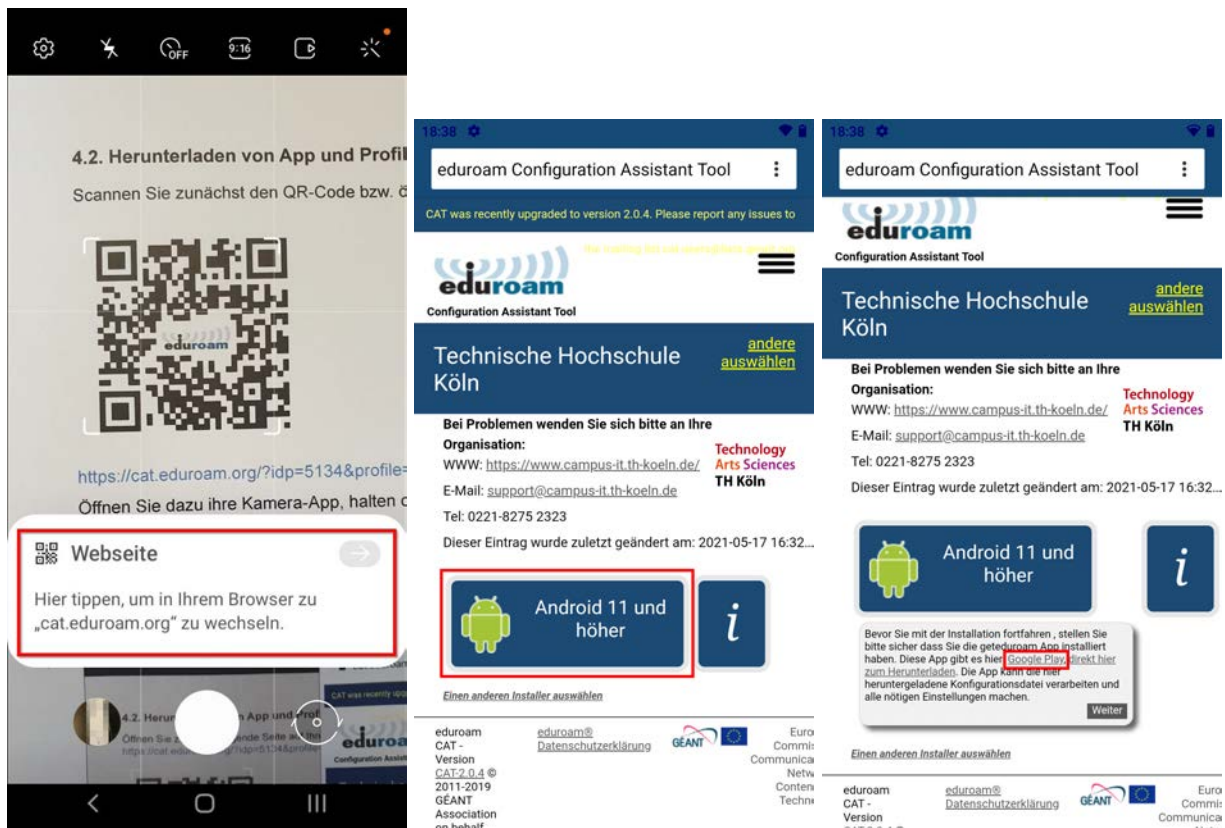


<https://cat.eduroam.org/?idp=5134&profile=8268>

Open your camera app, point the phone to the QR-Code and wait for the code to be recognized. Click the button to open the link with your browser.

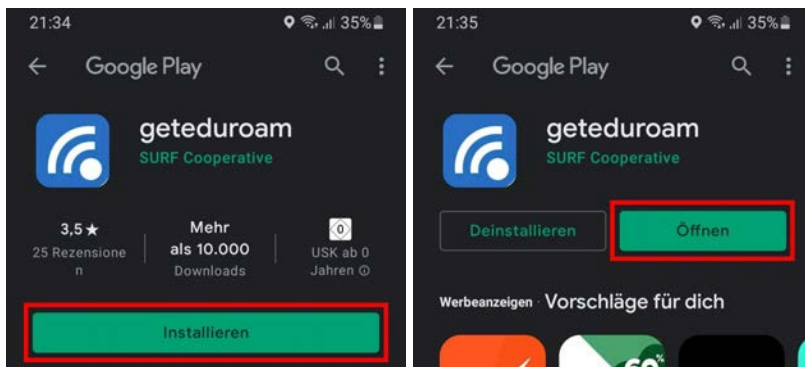
On the website click **Android 11 and above**.

Now click on the link for the corresponding app store (usually **Google Play**).

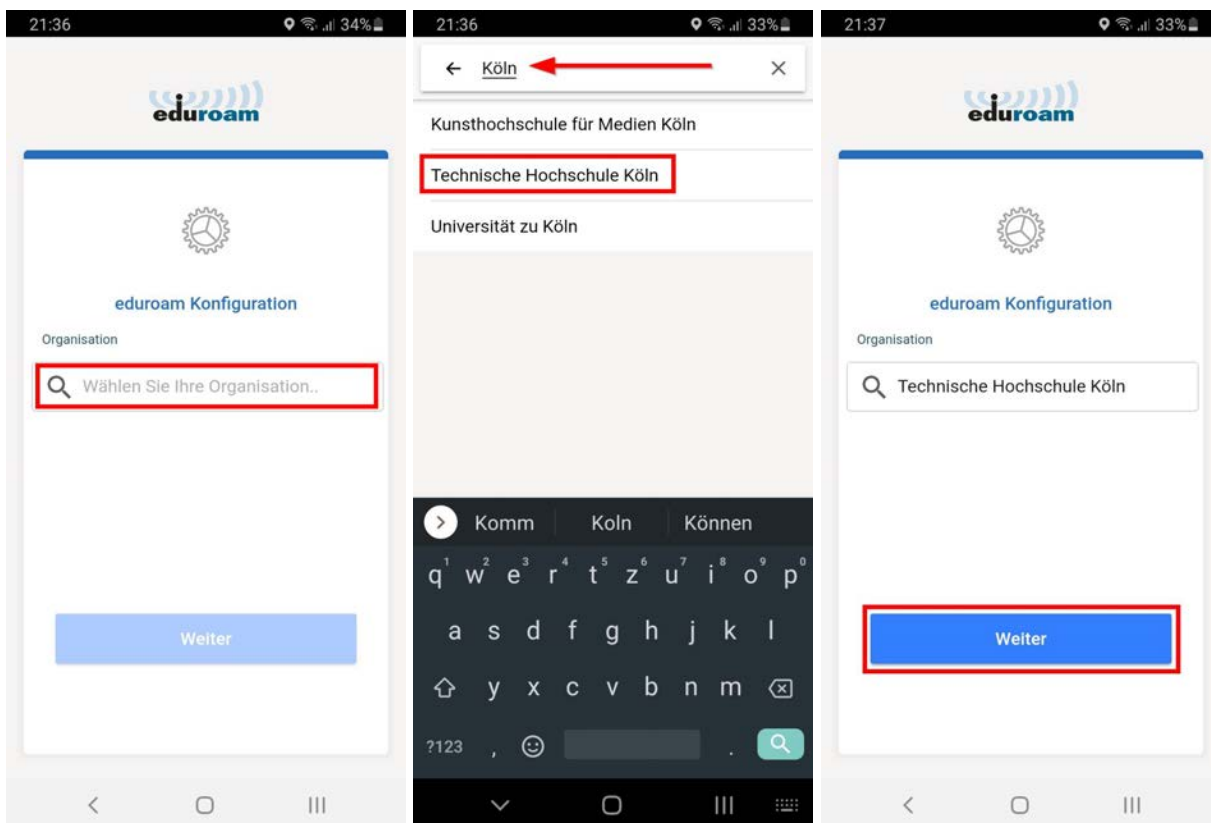


## 5. eduroam on Android 11 and above

Click **install** and open the app, after the installation is finished.



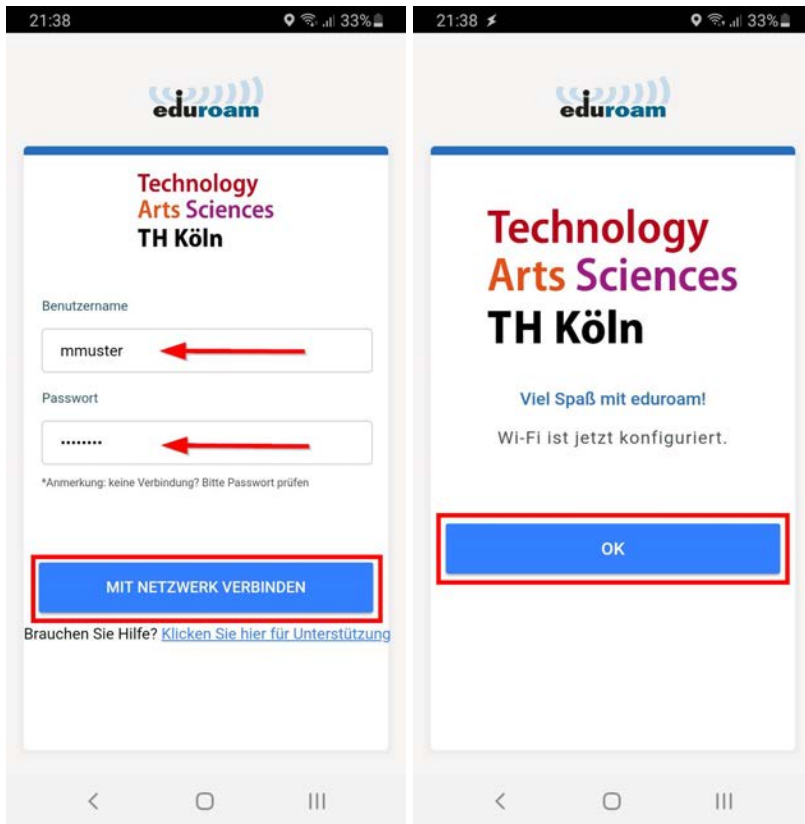
Click on the text box **Choose your organization** and type in **köln**.  
Now select the entry **Technische Hochschule Köln** and click **Next**.





## 5. eduroam on Android 11 and above

Type in your **campusID user name** and your **campusID password**.  
COntirm your input with **Connect with network**.  
Click **OK** to finish the configuration.



You are now connected to the eduroam network.

## 6. eduroam on iOS 13 or later

For initial setup of eduroam on your device make sur you have an active Internet connection (mobile data such as LTE / 4G / 4G+, another WiFi or wired network). There are only a few kilobytes to download.



If you still have an old eduroam configuration, you first need to delete the old profiles from your iOS device.



Please keep your iPhone up to date with the latest software version (firmware update).



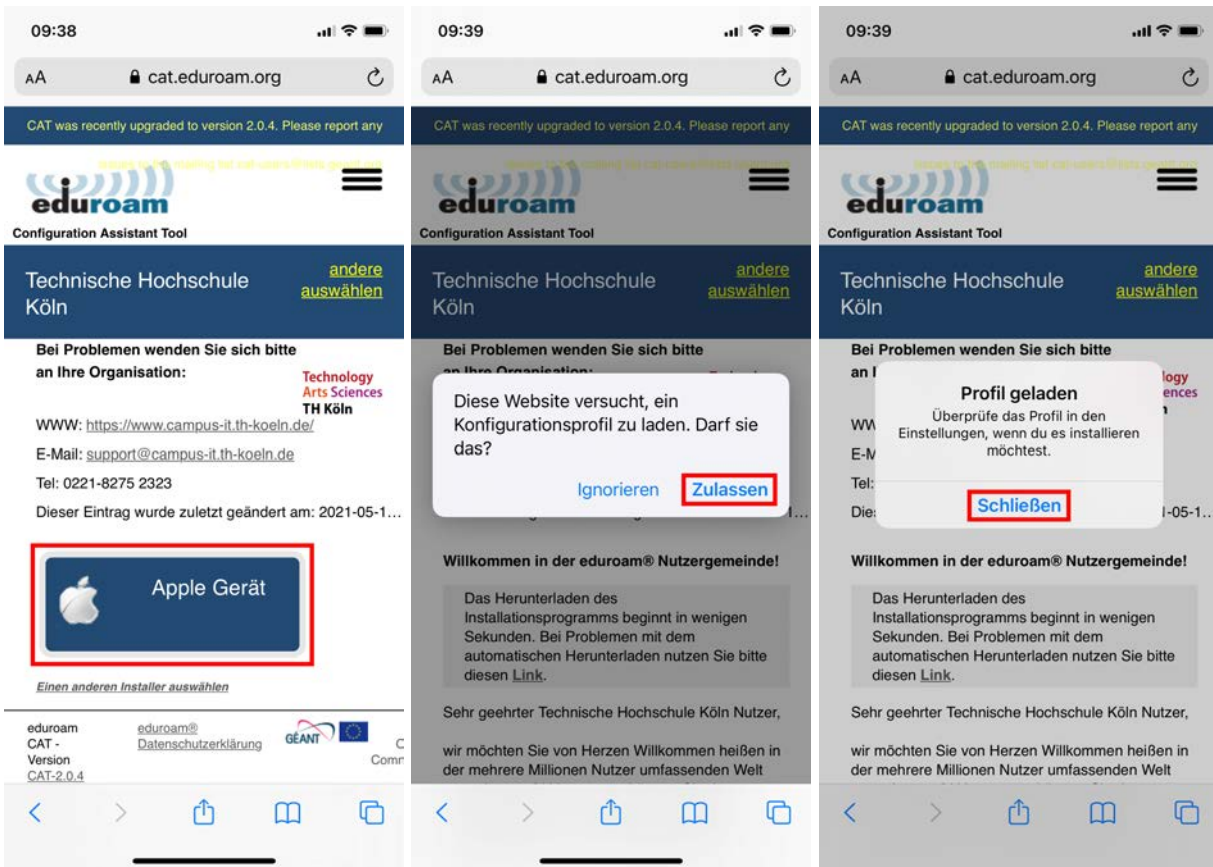
<https://cat.eduroam.org/?idp=5134&profile=8268>

Please scan the QR code with the standard camera (DO NOT take a photo!!!) the web page via the link above in the Safari browser.



## 6. eduroam on iOS 13 or later

Open the displayed address in Safari, select **Apple Device**.  
Select **Permit** to load the configuration profile.  
Click **Close** when the profiles has been loaded.

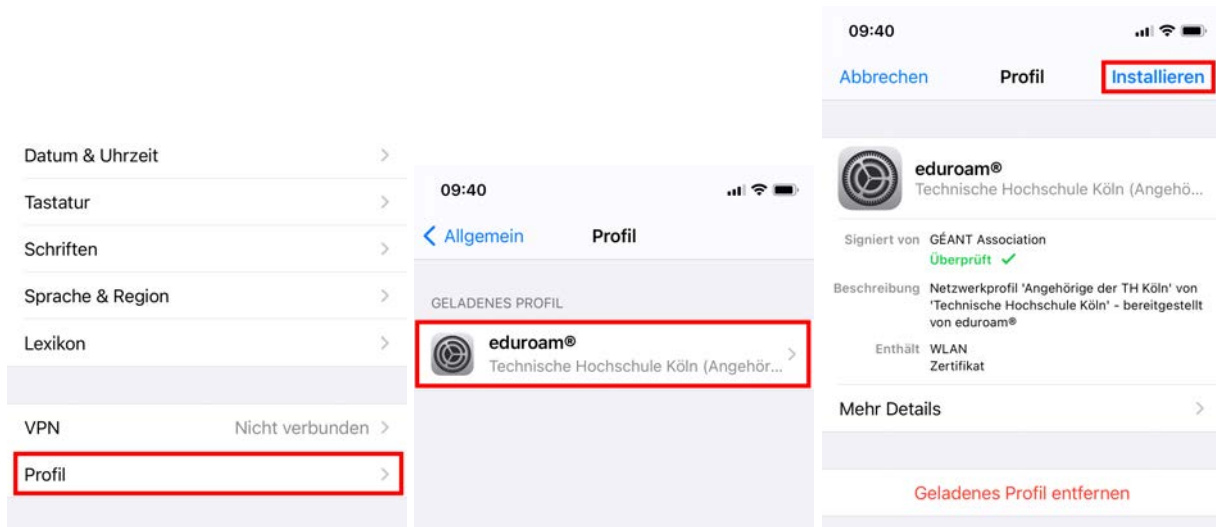


On the Home screen, find and open the **Settings** icon. Scroll down the settings until you find **General** in the menu. Open the **General** menu.

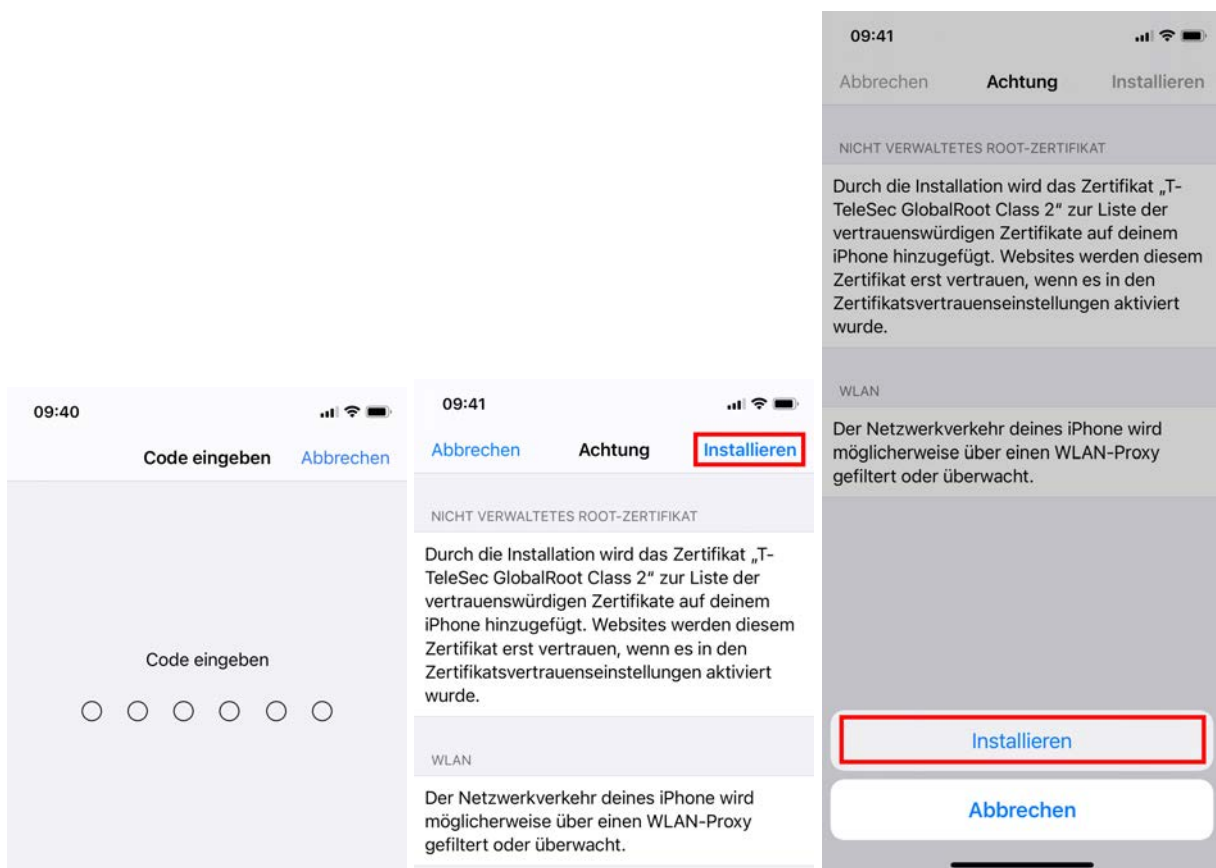


## 6. eduroam on iOS 13 or later

Scroll down the **General** menu until **Profile** appears.  
Open the **Profile** menu. The **eduroam** profile can be installed here.  
Tap **eduroam®** to enter the installation menu.  
Tap **Install** here.

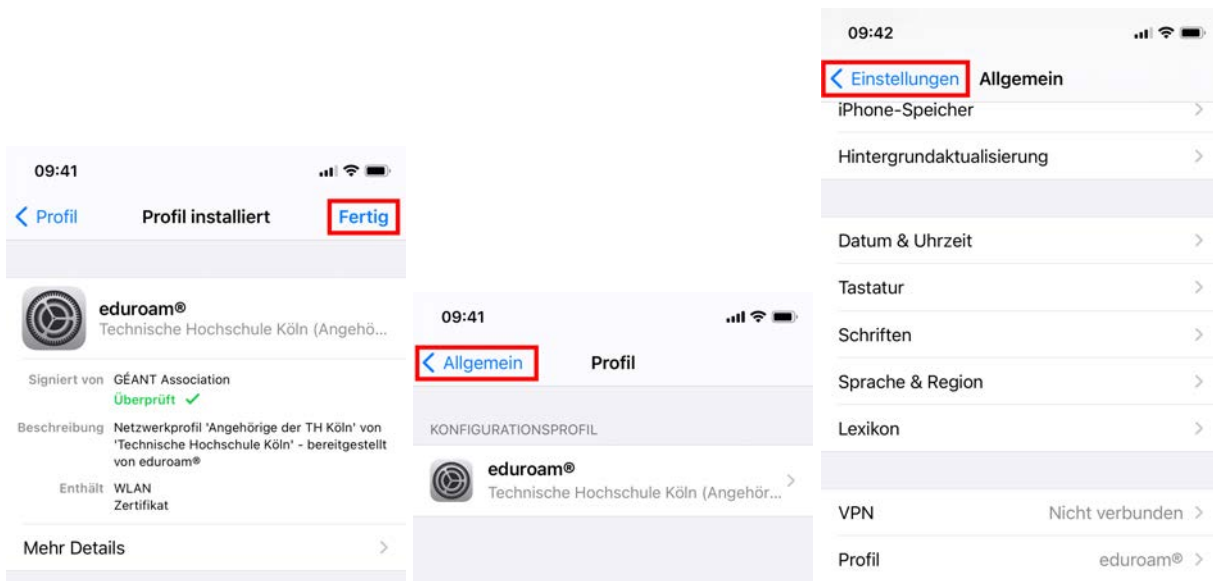


Please enter your passcode for **Enter your passcode**.  
Then select **Install** twice in succession.

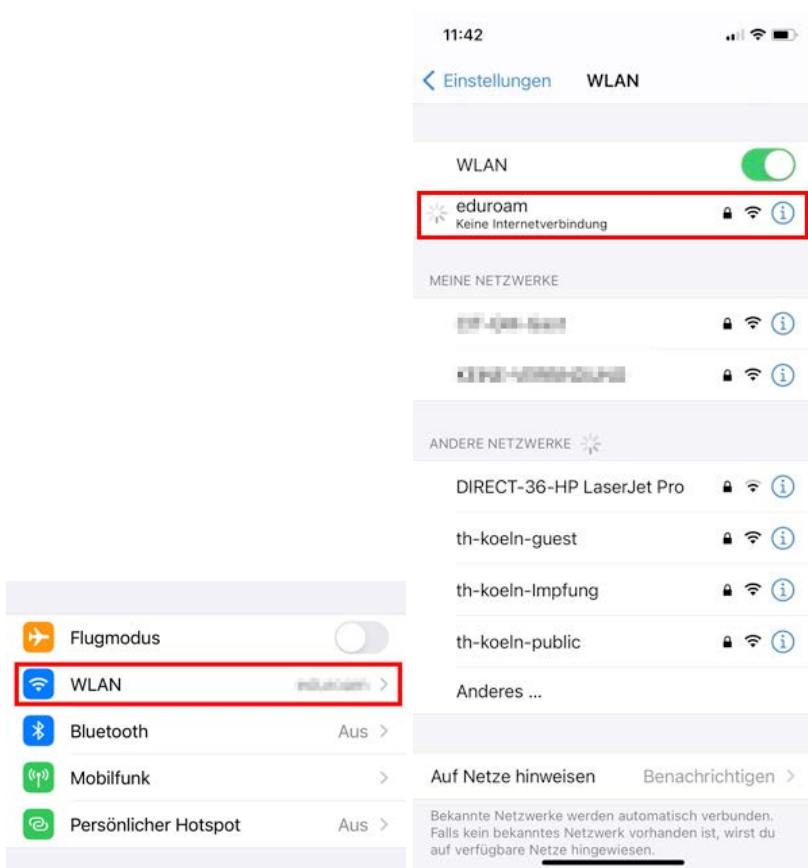


## 6. eduroam on iOS 13 or later

Now click **Finish**, **General** and **Settings** to go back to settings.



Now choose **WiFi**. In the **WiFi** menu click on **eduroam**.

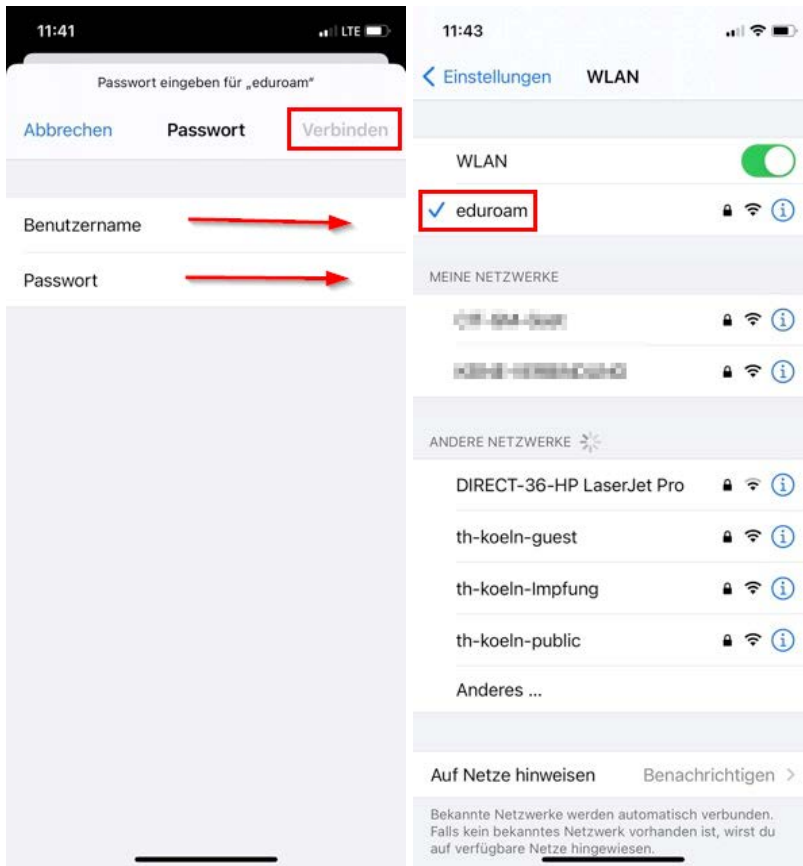


## 6. eduroam on iOS 13 or later

Enter your **campusID user name** in the user name field and your **campusID password** in the **password** field.

(You can also log in to PSSO and ILIAS with the campusID).

Complete the installation with **Connect**.



If all of the login details have been entered correctly, the iPhone automatically logs on to the **eduroam WiFi**.

## 7. eduroam on macOS

For initial setup of eduroam on your device make sur you have an active Internet connection (another WiFi or wired network).



Alternatively you can copy the configuration profile via USB drive from another device.

Open the page <https://cat.eduroam.org/?idp=5134&profile=8268> in your Internet browser and download the Apple configuration file by clicking **Apple device**.



In some browsers, you have to start the download manually by clicking on the right mouse button and **Save as**.

Do not save the file as `.txt`, but as `.mobileconfig`.

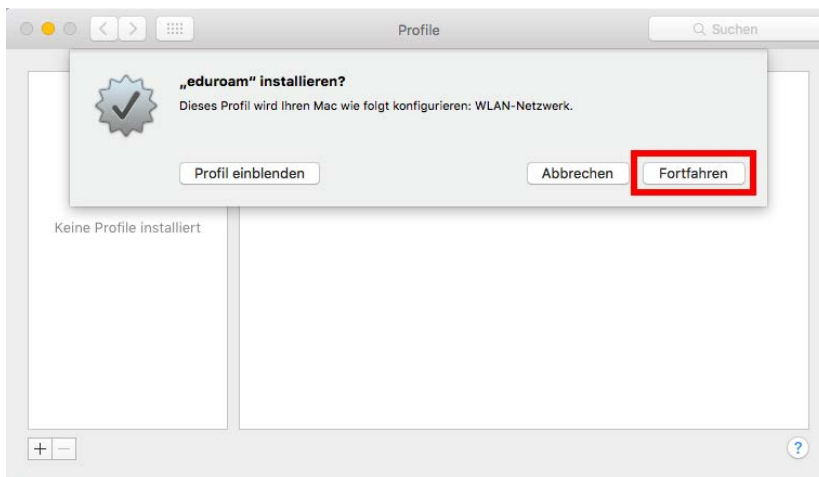
The screenshot shows the eduroam Configuration Assistant Tool interface. At the top, there's a navigation bar with links for 'Startseite', 'Über', 'Sprache', 'Hilfe', 'Verwalten', and 'Nutzungsbedingungen'. Below this, the site name 'Technische Hochschule Köln' is displayed. A sidebar on the right contains the logo for 'Technology Arts Sciences TH Köln'. The main content area includes contact information and a red-bordered button labeled 'eduroam® Installationsprogramm herunterladen Apple Gerät'. Below the button is a small 'i' icon and a link 'Einen anderen Installer auswählen'.

Accept the request to download the eduroam profile by clicking on **Allow**.

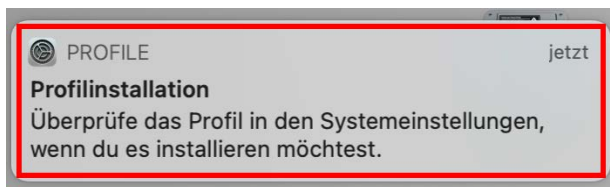
This screenshot shows the same website as the previous one, but with a system dialog box open in the foreground. The dialog box asks: 'Möchtest du Downloads auf „cat.eduroam.org“ erlauben?' and 'Du kannst in den Einstellungen für Websites festlegen, welche Websites Dateien laden dürfen.' The 'Erlauben' button is highlighted with a red box. The background website content is partially obscured by the dialog box.

## 7. eduroam on macOS

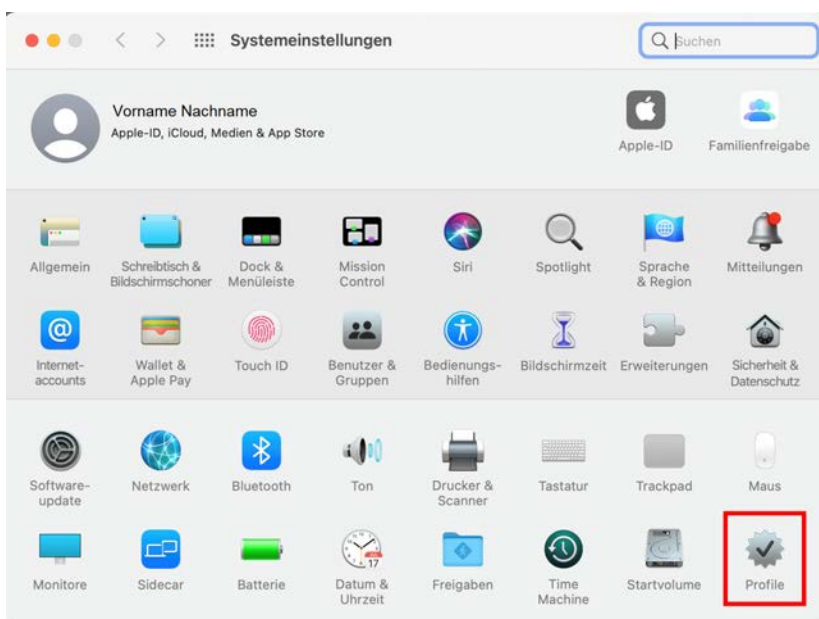
Accept the request to install the **eduroam** profile by clicking on **Continue**.



You will now be notified to install the profile.  
Click on the notification to open **System Preferences**.



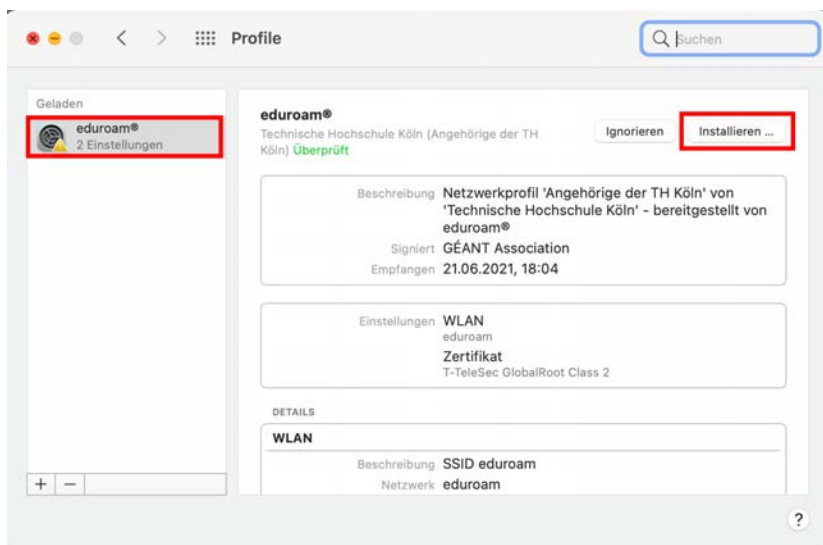
Click on **Profiles**.



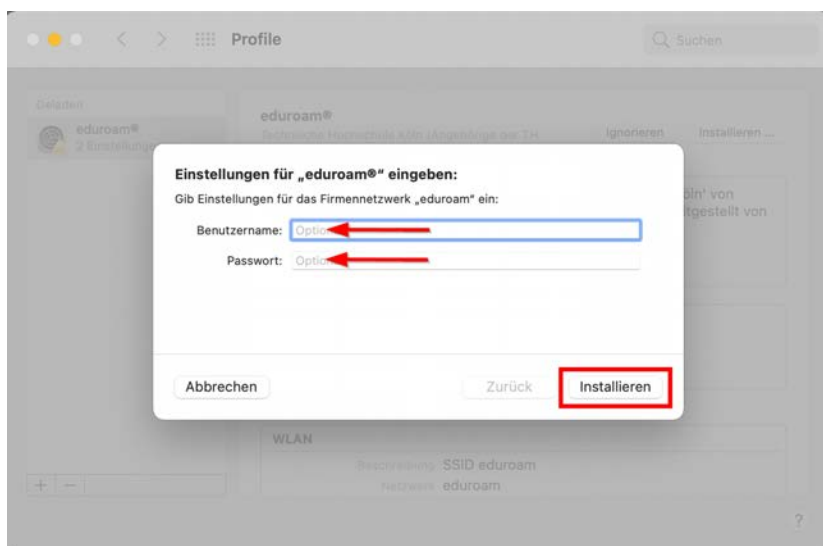


## 7. eduroam on macOS

Select the **eduroam®** profile and click on **Install ....**

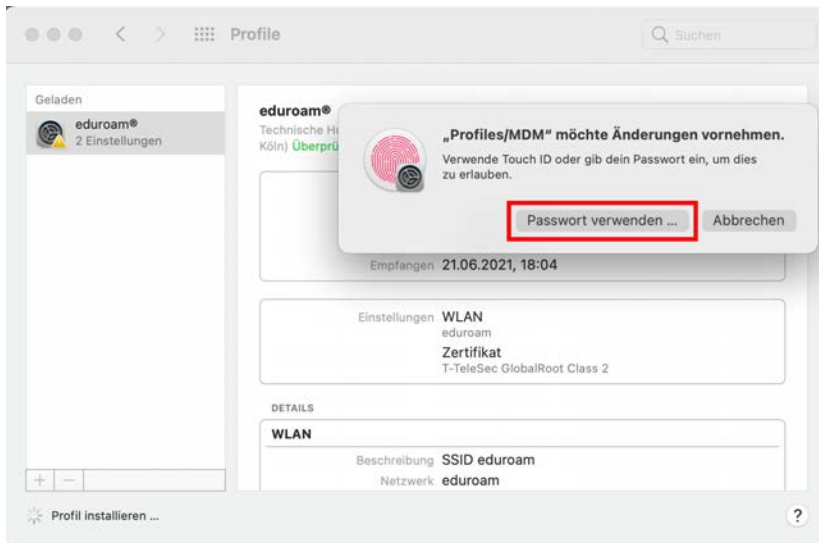


Enter your **campusID** user name and your **campusID** password in the next dialog and then click on **Install**.

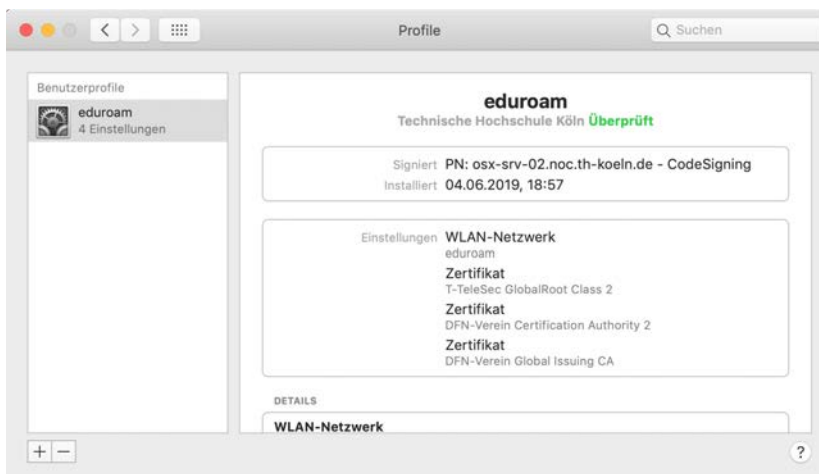


## 7. eduroam on macOS

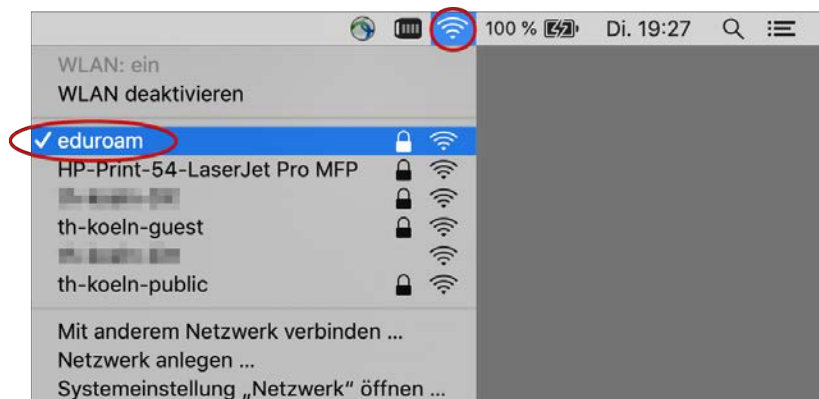
In the next step, please authenticate yourself on your Mac with your user account as you will be making changes to the system settings during the installation.



The new profile will then be installed on your Mac.



Please click on the network icon in the upper menu bar and activate the **eduroam** connection.



## 8. eduroam on Linux

For initial setup of eduroam on your device make sur you have an active Internet connection (another WiFi or wired network).



Alternatively you can copy the installation script via USB drive from another device.

Open the following website in the browser of your choice.

<https://cat.eduroam.org/?idp=5134&profile=8268>

Click the **Linux** button.

Confirm the download with **OK**.

## 8. eduroam on Linux

Then open the **terminal** and enter the following commands to start the installation:



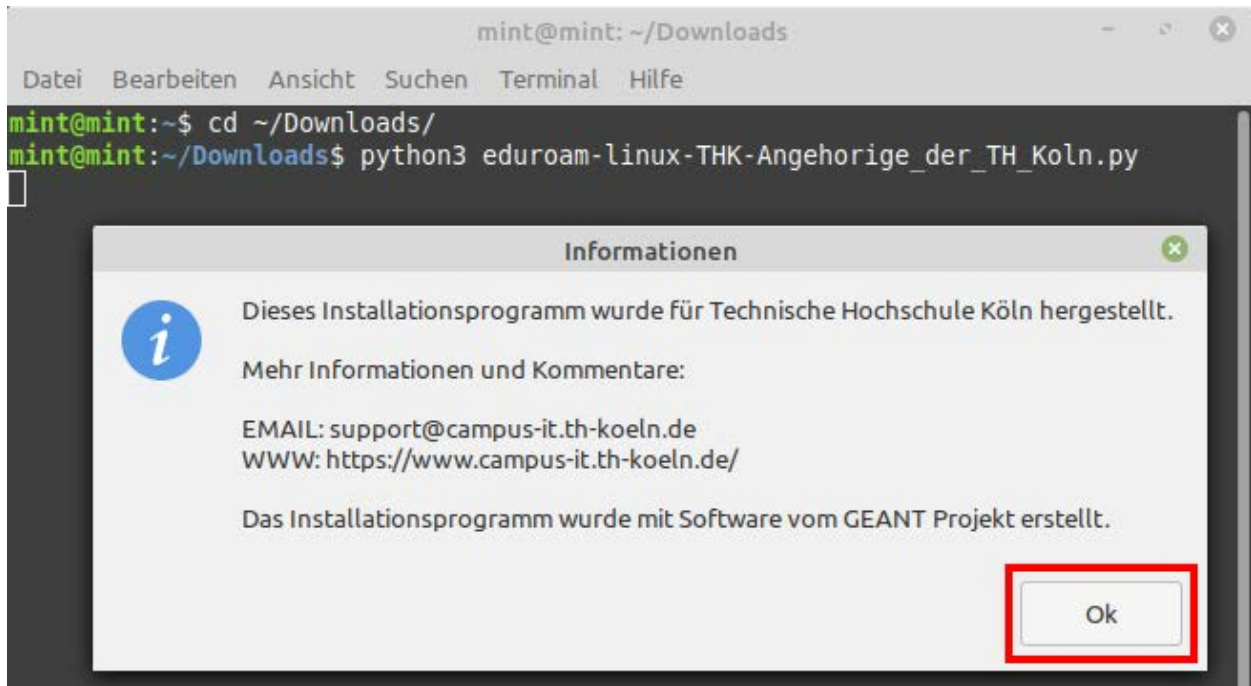
You need **python** to execute the installation script.



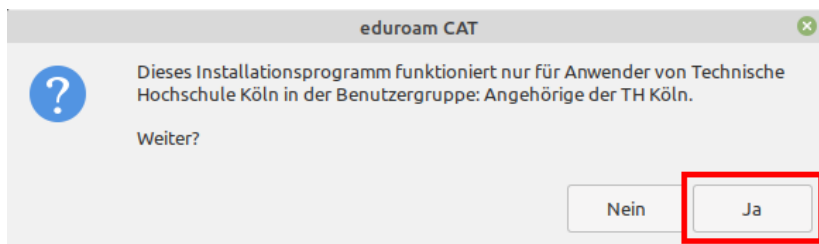
You may need to change the path to the downloaded file.

```
cd ~/Downloads
python3 ./eduroam-linux-THK-Angehorige_der_TH_Koeln.py
```

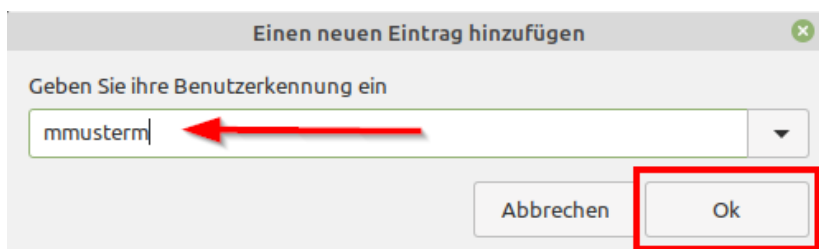
This notification follows. Please click on **OK** here.



Please click on **Yes** in the following dialog.



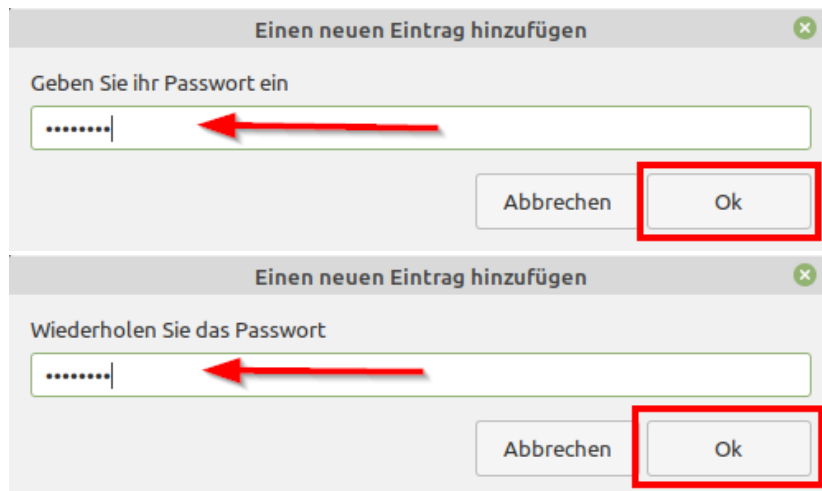
Enter your **campusID user name** in the next window.



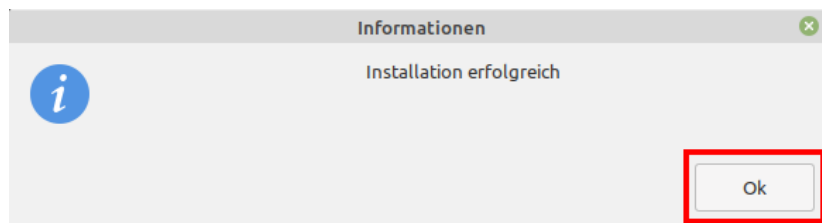
## 8. eduroam on Linux

Then enter your **campusID password**.

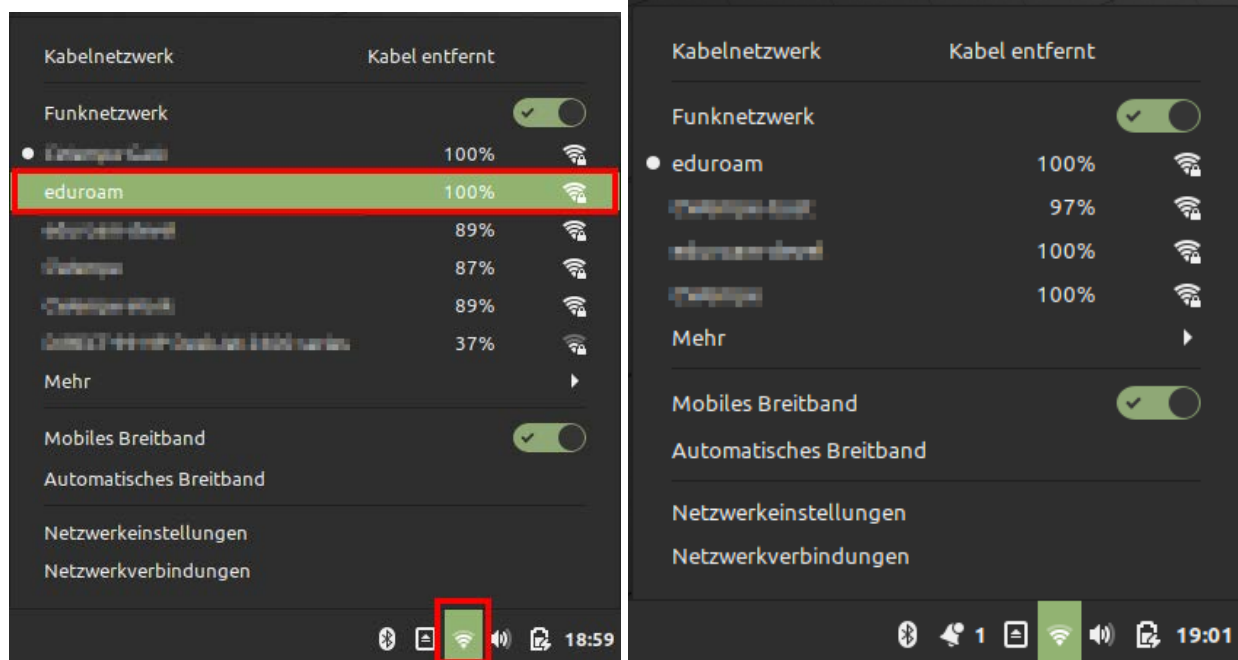
The password must be input again in the next window.



The installation is now complete. Click **OK**.



Now click on the Wi-Fi symbol and select **eduroam**.



You are now connected to the **eduroam** network.

## 9. Contact

### Campus IT Service Desk

You can contact our Service Desk on the telephone number +49 (0)221/8275-2323 during the following office hours:

Monday - Friday 8:00 am - 6:00 pm

Saturday: 10:00 am - 2:00 pm

You can also contact the Service Desk by e-mail at [support@campus-it.th-koeln.de](mailto:support@campus-it.th-koeln.de).

### On-site support

#### Deutz campus service hours

Betzdorfer Str. 2

50679 Cologne

Room ZO-03-20

Monday - Friday: 8:00 am - 6:00 pm

Saturday: 10:00 am - 2:00 pm

#### Südstadt campus service hours

Ubierring 48

50678 Cologne

University Library

2nd floor, Room 203

Monday, Tuesday

Thursday - Saturday: 12:00 pm - 4:00 pm

#### Gummersbach campus service hours

Steinmüllerallee 1

51643 Gummersbach

Main building, Room 1.102

Monday - Friday: 11:00 am - 4:00 pm

#### Leverkusen campus (Chempark) service hours

Kaiser-Wilhelm-Allee

51368 Leverkusen

Building E39, Room 044d

Wednesday: 10:00 am - 2:00 pm